

Caesar Rodney High School

Caesar Rodney Band Parents Association



Band Parents Handbook

VERSION 1.0
(AS OF 6 AUG 08)

What is the Caesar Rodney Band Parents Association?

The Caesar Rodney Band Parents Association, or CRBPA, is a tax-exempt entity created accordance with Section 501 (c) (3) of the United States Internal Revenue Code. It is often referred to as “CRBPA” or the “Association.”

Our Goals. The objective of the association is to provide financial support to Caesar Rodney HS music activities, augment the band staff through volunteer service, serve as a communication link on issues of importance between members and band staff, and engage in any other lawful activities that further the exempt purpose of the Association.

The Association benefits performance-based music activities such as the marching band, color guard, concert band, and jazz band ensembles.

The Association Board of Directors:

Band Director.....DuWane Sandlin
 President.....Ken Hoffmann
 Vice-President.....Kathy Matthews
 Immediate Past PresidentDenise Barnes
 Secretary.....Karen Bourey
 TreasurerChuck Nichols
 Ways and MeansJohn Moore
 Member at Large.....Diane Schroeder
 Member at Large.....Laurie Brumbaugh

CRHS Music Department Staff (The Band Staff):

Band Director.....DuWane Sandlin
 Assistant Director.....Vanessa Sandlin

Assistant Director.....Keith McCarthy
 Drum MajorKatie Galgano
 Guard Staff.....Drew Miller, Becky Schroeder
 Percussion StaffSteve Tipping, Colin Bunnell, Cameron Galbreath, Greg Allis, Jarvis Barnes
 Visual StaffCliff Richmond, Jennifer McCarthy, Andrew Buffenmyer, Nathan Kling
 Music ConsultantJoe Naff
 Drill Design.....DuWane Sandlin
 Music ArrangerKey Poulan, Mark Fifer
 Percussion ScoreSteve Tipping
 Guard Choreography.....Drew Miller

Monthly Meetings. Meetings are held at CRHS (Band room) at 7:30 P.M. on the first Tuesday of the month from September through June. In August the regular meeting occurs on the second Tuesday of the month.

The monthly meetings are a great source of CRBPA information and a way to get up to date information from Mr. Sandlin. You can also turn in money from fundraisers, sign up for various events, order logo items, and meet other parents.

There’s no meeting during the month of July. Additionally, annual meetings are held each May for the purpose of holding elections, receiving reports of officers, board of directors, and committees and for any other business that may arise.

Membership Fees. Membership dues and any fees will be recommended by the Finance chair to the Board for approval, then to the general membership for vote. In 2007 the fee was set at \$5 per family. Each family will be required to make one dues payment. There will be no limit to family size but “family” for purposes of dues

payment is defined as those living in the same household.

Detailed information can be found in the Bylaws which can be downloaded at the CRBPA website.

How Do We Keep Informed?

Web Site. The CRBPA web site (<http://www.crbpa.org/>) is a place that you will want to visit often not only to keep informed, but also to view the pictures of the band's activities. Important too, is to check out the music department's web site (www.crbpa.org) for important messages. At both websites you will find the latest information on all upcoming events and fundraising opportunities.

You may have noticed photographs of band members on the website. Before any student's photo is posted, a permission form must be completed. The form can be found at the CRBPA website. Guidelines on use of photos can be found there as well.

Weekly Handouts (Marching Band Season). During marching band season, Mr. Sandlin will issue your student a schedule that outlines in detail the events for the week. This sheet is extremely valuable! Ask your student for it and post it on the fridge or some public location in your home. This will save you and your student a lot of grief that can occur from arriving late to an event.

Band Box. A locked box known as the "Band Box" is located just inside the band room. This box can be used to submit items such as band photo orders forms, ticket order forms, and money for fundraisers. Please place items in a sealed envelope with the name of your student and the event written on the front. Please NO CASH. Only Board members have access to this

box and will check it on a regular basis. Have your student drop items into this box.

How Do Parents Get Involved?

Become a Member. The easiest way to volunteer is to join the Caesar Rodney Band Parents Association and attend the monthly meetings. You don't have to be a member to volunteer, but in order for your student to take advantage of the points reward program (discussed below) you must be a member. At the meetings you can learn more about the committees and other programs that need help. As a guideline, the CRPBA suggests that each family contribute 25 volunteer hours each season.

Involvement Means Low Fees. You may have noticed that there are minimal "band fees" at CRHS. The CRBPA chooses to offset costs through fundraising-- Nearly all costs associated with a band season are covered by the annual budget. In contrast, many schools charge fees that can amount to hundreds of dollars. As a result, all CRHS students have an equal chance to participate. *This happens because parents get involved.* Anyone can help; grandparents, siblings, any member of your family can get involved and make a difference. Friends are welcome, too.

Check the CRPBA website for the latest information.

What Kind of Committees Are There?

Committees are the basic building blocks of the CRBPA; they efficiently and effectively provide services and fundraising for the Association. Fundraising activities are wide ranging, there's something for everyone's time budget. They

can be a single, one-time event or activities that span the entire season.

The Budget. The association depends on fundraisers to produce income that will meet budget goals. Last year, the 2007-2008 budget exceeded \$45K with major expenses going towards shows and equipment, the Florida trip, administrative costs, and scholarships. The budget was met and another successful year went into the books.

Listed below are the committees, their chairs, and a brief description of their purpose.

*Standing committee

(Activity Chair. Description and Volunteers Needed)

Awards Banquet..... Maryanne Grau. Annual spring award banquet that recognizes graduating seniors. 5-10 volunteers.

Basket Bingo Vanessa Sandlin. Bingo featuring Longaberger basket ware. 3-4 volunteers for the event, request all CRBPA members to donate/attend.

Bylaws* Kathy Matthews. Periodically reviews the Association bylaws and propose recommendations for the Board to consider.

Car Wash..... Jill Wilson. Held twice each year, mostly a student event, chaperones provide supervision. Please supply kids and towels.

Chaperones* Bob Schroeder. Provides supervision to students when out of contact with band staff. 10 Permanent chaperones with 3-4 event chaperones needed for each event. Additionally, we have two medical chaperones, both Registered Nurses.

Dover Downs Scott Weber. Work for Dover Downs concessions department. 10-20 volunteers for each race.

Equipment* Dan Layte. Also known as the Pit Crew. Moving, setting up, tearing down, and packing of any and all equipment related to marching band, concert band, and jazz band ensembles. 8-10 volunteers per event.

Finance Committee* ... Kathy Matthews and Mary Ann Palmer. Prepares a balanced budget for the ensuing year's activities. 2-4 volunteers.

Golf Tournament Joe Galgano and Ken Hoffman. Annual major fundraiser held at Jonathan's Landings Golf Course. 5 volunteers.

Logo Wear..... Rob and Sandy Ebert. Sell promotional products and merchandise customized with the CR logo. 2 volunteers per event.

Membership Mary Moore. Maintains a membership database; point of contact to join.

Mentor..... Lorraine Loera. Program designed to acquaint freshman and new parents to the band program. 5-8 volunteers.

Nominating* Kathy Matthews. Solicits the general membership and Board members for potential nominees to standing offices each year. 2 volunteers.

Point Tracking* Ken Hoffman. Reward program that provides an incentive to volunteer by "paying" back for participation.

Public Relations Mary Moore and Nancy Knapp. Interface between the department and various media outlets. Need volunteers who like to write/take pictures.

RafflesLorraine Loera. 50/50 Raffle held at home football games. 8 volunteers per game.

Rider Band CardJohn Moore. Discount card that provides savings at many area businesses. 2-4 volunteers to solicit participating businesses. Need all members to help sell the cards.

SCRIPGeorge Knapp. Prepaid card program that gives the Association money back for each card purchase. Need all members to participate.

Senior DVDShari Galgano. Produces video montage presented to graduating seniors. Photos and video of band members are encouraged and may be submitted to Shari, please see the instructions for submission on the website.

Snack ShackKathy Matthews. Major fundraiser that sells snacks and drinks during all football games and occasionally other events. 10 volunteers per event.

Uniforms*Diane Schroeder. Manages issue, tracking, repair and storage of all band uniforms. 4-6 volunteers.

Video TapingMarlene DeGennaro. Video tapes all marching band performances for band staff critique.

Ways and Means*John Moore. Develops and employs plans to achieve the budget goals. Fundraising activities fall under the Ways and Means Chair.

Web Site.....Shari Galgano. Please see the website for the photograph permission form.

Are There Any Incentives to Helping Out?

Earn Reward Money. By volunteering you not only help meet budget goals but you can earn money towards your student's special trip costs. The CRBPA uses a point system that awards points based on dollars you help earn during fundraisers.

You can also collect points for time spent volunteering. The points have a single goal which is to offset your student's trip expenses related to the "big" trip (usually to Florida) or the smaller trip (usually to Hershey Park.)

Points earned can not be used for any other purpose. The more points earn the less money you'll spend on your students trip.

Point System. Every time you help with an activity, your event chairperson will submit your points earned to the Points Chair. (Points are normally tracked by your student's name, but you can assign points to any student) Then, before a trip, the Points Chair will receive from the Board a monetary value for each point.

Points are then converted to cash that is applied to the trip bill. You can carry points over from a "small" trip year and apply them to the following year's "big" trip. The key here is to volunteer early and often. Several students in the past have had their entire Florida trip paid through the point system.

What Do We Need to Know About Band Camp?

Band camp is a two week rigorous program designed to build teamwork, learn drill, and practice music. It's held at CRHS, and all

marching band members must attend band camp.

Camp begins during the first week in August and runs for two weeks. Typical schedule has students beginning weekdays at 8:30 AM and wrapping up at 8:00 PM (except for Fridays, which end at 4:00 PM) Students have an hour for lunch and two hours for dinner. Since there's just an hour for lunch it's recommended that students stay on campus for lunch. The Association will typically offer lunch (See the Snack Shack chair if you can help) offering a new menu item daily such as subs, pizza, hotdogs, or meatball subs. Dinner is not offered.

Water is available all day. Students may also bring water bottles.

Exhibition Night. On the last day of camp, an evening exhibition is given for families and friends to see the new show. Then, following the exhibition, a school tradition called the March-Off takes place. The March-Off measures each band member's ability to follow complicated drill. The top three finalists will receive a coveted prize: The bronze, silver, or golden shoe award. At the completion of the show the CRBPA holds a cookout at the snack shack.

Check for important information and camp calendar on the web site (www.crband.org)

What is a Typical Marching Band Season Like?

The marching band season begins early in June with summer marching rehearsals, band camp in August, then football and band competitions until November. Time commitment is steep, band camp lasts two weeks, and they practice every weekday in the fall from 3 – 5 PM. The

band attends most football games, home and away, on Fridays and some Saturdays.

The band also competes against other high schools bands on Saturdays. These are known as TOBs or Tournament of Bands competition. At a TOB, anywhere from 5 to 30 bands will compete within groups whereby they are judged on music, visual, and percussion performance. The season leads to the Chapter Championship where the winner will have chance to compete at the Atlantic Coast Championship against the best of the best.

Football Games. The band will attend most football games to provide entertainment and motivation the players and fans. At home games the band will take its place in the stands in the section nearest to the school. They play "stand music" until late in the second quarter when they move down to the field to for the half-time show warm up. Following the halftime show, the band will take a break during the third quarter to visit the snack shack and restrooms. At the start of the fourth quarter they move back to the stands.

For away games, the band will typically perform the show prior to the start of the game. Afterwards they move to the stands until halftime where they allowed to go on a break.

Tournament of Bands. When the marching band competes, it is under the sanction of TOB, or Tournament of Bands, which is one of the largest competitive band organizations in the country. Founded in 1972 by the National Judges Association, TOB has grown to over 400 active schools. TOB is divided into 13 Chapters that encompass nine states from New York to North Carolina and as far west as Ohio. On any given Saturday in the fall, the TOB will have from 12 to 18 field band competitions providing the opportunity for hundreds of Marching Bands to participate in its competitive arena. You can

get scores and more TOB info at these web sites: www.tob.org. and www.bluewaveband.org/bluewaveband.asp.

Our Chapter and Group. Caesar Rodney HS belongs to Chapter 9 which includes these states and counties: (DE) Kent, New Castle, Sussex. (MD) Anne Arundel, Calvert, Caroline, Cecil, Charles, Dorchester, Hartford, Kent, Princes Georges, Queen Annes, Somerset, St. Mary's, Talbot, Wicomico, Worcester. (VA) Accomack, Northampton. Each chapter is divided into four groups, based on the number of players in the band. CRHS is a Group 3 Band and in 2007, the Rider Marching Band won the Group 3, Chapter 9 Championship.

Group Sizes: Bands are grouped according to the number of players (not including the color guard) as follows: Group 1 - up to 30 musicians and a maximum of 30 auxiliary; Group 2 - 31 to 50 musicians and a maximum of 50 auxiliary; Group 3 - 51 to 75 musicians and a maximum of 75 auxiliary; Group 4 - 76 or greater.

Competitions. Competitions are a very focused and important aspect of the marching band. At competitions the band is given a block time of 14 minutes to enter, present the performance, and exit the field. The visual and music performance must be a minimum of seven (7) minutes and a maximum of ten (10) minutes. The judges rate the band's performance on a group level as well as an individual level. They rate visual proficiency, music proficiency, composition, technique, and showmanship. There are specialty awards for Percussion, Auxiliary, Drum Major, Brass, and Woodwinds. Anticipation is intense as the students wait for the announcement of specialty awards and individual band placement at show's end. *In other words, TOBs are a big deal.*

Atlantic Coast Championship (ACC's). ACC's are the final band tournament of the year

which this year it will take place in Allentown, PA. This is a two day event where nearly 100 marching bands compete for the chance to be called a champion. Two groups will compete each day: Group 1 and 4 will compete on Saturday, and Groups 2/3 on Sunday. The days and groups alternate each year. Dress warm as this is an all-day event where you can watch the best bands on the east coast. Last year CR was a 7th Place Silver Medal Finalist at the 2007 Atlantic Coast Championships.

Is There Anything Else I Should Know About TOBs?

Etiquette. Band competitions, or TOBs, have their own set rules for conduct just like any other spectator event. For instance, it's not proper to enter or leave your seat during a performance. (Usually ushers will close the entrance to the stands as the performance starts) Please wait until the band has completed its performance before moving in the stands.

Caesar Rodney HS typically has a large contingent of fans to motivate the band and they appreciate our cheering. This is a good thing; however, other band parents may not enjoy our enthusiasm as much. Please keep it positive and sportsmanlike.

There's a Time to be Quiet and Loud. TOB's are like golf matches in that the crowd is expected to remain quiet during the performance. At the end of a particular movement spectators will sometimes cheer if the performance was crisp.

Conduct During Concerts?

Please remember to turn off cell phones, pagers, and other electronic devices. If you have young children in attendance, remind them how they should behave. If they are disruptive during the

concert, please be considerate of others and leave the auditorium. Catching up with friends can be done after the concert. This is the time to focus on our student's accomplishments. Please eat and drink before or after the performance, not during. If you leave after your student has performed, but others are still performing, please keep voices low in the lobby as the sound carries.

What's a Typical Concert Band Season Like?

The symphonic band concentrates on the mastery of music fundamentals and techniques, as well as the exploration, rehearsal, and performance of concert band literature.

The symphonic band (also referred to as the concert band) season begins with school year as students rehearse their during band class.

Typically concerts are given three times each year; the winter concert in December, the mid-winter concert in February, and the spring concert in May. The winter concert usually has a holiday theme. The concert band is divided into the Gold Band and the Blue Band; students are placed according to their music abilities.

Additionally, concert band members will provide musical accompaniment during the fall and spring theatrical/musical productions. These students are known as "Pit Bulls" and are musicians chosen from the concert bands.

What's a Typical Jazz Band Season Like?

Jazz band is similar to the concert band in that it starts at the beginning of the school year with practice held during the school day. Performances are given at the Night-O-Jazz

concert in May. The Jazz Band plays at the school Holiday luncheon in Dec. And, like the concert band, students are placed according to their abilities in either Jazz I or Jazz II. In the past the jazz band has been invited to perform at the Delaware Teacher of the Year banquet. Many members of the Jazz Band will also play in the Basketball Band which provides entertainment during the basketball and wrestling seasons.

Schedule?

Rule number 1 regarding schedules: CHECK THE WEBSITE. Below is a tentative schedule and very much subject to change. The website will have the official, up to date information.

September 2008

Sept 6, Fri, Football at William Penn HS
Sept 12, Fri, Football Home Middletown HS
Sept 19, Fri, Football Home Salesianum HS
Sept 20, Sat, Lancaster, PA TOB (TBD)
Sept 27, Sat, Lake Forest HS, TOB (No football)

October 2008

Oct 3, Fri, Football at Cape Henlopen HS
Oct 4, Sat, Severna Park HS, MD TOB
Oct 10, Fri, Football at Poly Tech HS
Oct 11, Sat, TOB Location TBD
Oct 17, Fri, Football at Sussex Tech HS
Oct 18, Sat, Queen Annes HS, MD TOB, William Penn HS, DE TOB
Oct 24, Fri, Football Home Smyrna HS (Homecoming Parade)
Oct 31, Fri, Football Home Sussex Central HS (Senior Night)

November 2008

Nov 1, Sat, Broadneck HS, MD Chapter 9 Championship TOB
Nov 7, Fri, Football at Dover HS
Nov 15/16, Sat/Sun, Atlantic Coast Championship Allentown, PA

Fall Play, TBD

December 2008

Winter Concert, TBD

All-State Jazz and Band Auditions, TBD

Holiday Luncheon

Holiday Pops Concert

Holiday Concert

January 2009

All-State Jr Band Rehearsal

All-State Orchestra

All-State Band

February 2009

All-State Jazz

Mid-Winter Concert

March/April 2009

Kent County Honors Band

May 2009

Spring Play

Spring Concert

Band Awards Night

Night-O-Jazz

How Will My Student Have Time?

For new students time management can be a challenging concept. With rehearsals each weekday, Friday night football, and competitions on Saturdays they can find themselves wondering where all the time went. How will they have the time to do all of this, and keep up grades?

Time management is the answer, and the good news is that students learn this skill precisely because the band program keeps them busy. Your student will learn how to keep a schedule, how to be punctual, and how to set priorities. Yes, your student. They learn that they must use

their time wisely or they will not have their work completed on time. Time away from practice or performing has to be spent doing schoolwork, and they'll soon realize that.

Your student will also become punctual. It will only take one time for someone to be late, and they will see that it's not worth facing Mr. Sandlin.

Rehearsals - Does My Student Really Have To Be There?

Rehearsals during Marching Band season are mandatory. Missing band members make it harder for everyone to perfect their drill and music. Because movements are added and changed continuously, Mr. Sandlin and his staff members need everyone present.

What about the Band Banquet/Awards Night?

A banquet is held each year in May to honor graduating seniors and recognize top performing musicians from all the different bands. It typically begins with a dinner in the school cafeteria then moves to the auditorium. Presentations are made by the students to their respective chaperones and by Mr. Sandlin to students for the various "best of" categories. Mr. Sandlin also presents a special tribute to the Drum Major. The student leadership will normally present a memento to Mr. and Mrs. Sandlin.

Uniforms: What Do They Wear?

Types of Uniforms. There are two types of uniforms; the marching band uniform and the concert band/jazz ensemble uniform. The

uniforms are the property of the school and are issued to each student during band camp for marching band and mid-November for concert band. Once the uniform is issued, it's the student's responsibility to ensure proper care and upkeep until they are returned in the following winter/spring. Each student receives a copy of the signed contract. Care instructions are issued along with each uniform and are also on the website.

Please Take Care of the Uniform. The CRBPA raises funds to purchase new uniforms and to pay maintenance costs. Therefore it's important to take care of the uniform so that the band will portray an outstanding image, provide a long and useful life, and keep uniform maintenance costs to a minimum. Should excessive damage occur to the uniform, the student will be charged to repair the damage. This will be in accordance with the actual uniform repair or replacement cost, as appropriate. The approximate replacement costs are provided with the *Care and Instructions* handout.

School-supplied Marching Band Uniforms. The marching band uniform for ladies and gentlemen consists of a jacket, pants, cape, baldric (sash), hat, garment bag, gauntlets (pair), hatbox, and collar band. Plumes are issued just prior to each event and are returned at the conclusion of every show. Color guard members are issued a separate costume with a design based around the show theme. Except for special occasions, they do not receive a marching band uniform.

Student-supplied Marching Band Uniform Items. Black gloves (Available at B&B Music \$3.00 to \$5.00), black shoes (B&B Music--Tell them you are with the Caesar Rodney HS Band to get our special price), black socks (at least mid-calf high.) For color guard members please see their coach for student-supplied items.

Please note that the students should have appropriate attire to wear under their uniform as they often need to change on the bus.

School-supplied Concert Band/Jazz Ensemble Uniform Items. The men's concert uniform consists of a tuxedo jacket, tuxedo pants, tuxedo shirt, cummerbund, tie, button studs (4). For the ladies, the concert uniform consists of a white blouse and skirt.

Student-supplied Concert Band/Jazz Ensemble Uniform Items. For gentlemen: black socks and black dress shoes. For ladies: nylon socks (nude or black) and black dress shoes (heels no greater than 2 inches.)

Each uniform piece has a unique identification number sewn into the garment. Please do not cut off, deface, or change these identification numbers. This number is significant because it is recorded in the contract signed by the student. Students should check all identification numbers to make sure they have been recorded properly.

Cleaning Fee. Students must pay a cleaning fee before being fitted for a uniform. This fee pays for the cleaning of the uniform after the student returns it at the end of the year. These are the current CRPBA cleaning fees:

Marching Band Uniform.....	\$6.00
Concert Band Uniform.....	\$6.00
Combined (Marching and Concert Band Uniforms).....	12.00

All other cleaning tasks during the year--scheduling, dropping off and picking-up pieces from the cleaner, costs for the cleanings, and so forth--are the responsibility of the student.

Marching Band Uniforms: What Should We Know?

Appearance at Marching Band Competitions.

Presentation is critical during Tournament of Bands competitions as points are deducted for poor appearance. Dirty pant legs, shoes, etc., as well as any incomplete or improperly worn uniform parts can result in a lower score for our school.

In addition to the general cleanliness, students must not wear earrings, facial rings, or other visible ornamentation. Students must keep their hair above their shirt collar (stuffed into the hat, as appropriate). Please encourage your student to take the extra time to ensure they look their very best.

Alterations. The bottom of the pant's hems should be three inches from the floor when wearing the black band shoes. When needed, students are responsible for hemming their pants to the appropriate length. Be aware that the length of the pants can be adjusted by lowering or raising the straps. Do not cut the pants, only fold over where desired. If alterations other than hemming of pants are required, the Uniform Committee will give the needed information.

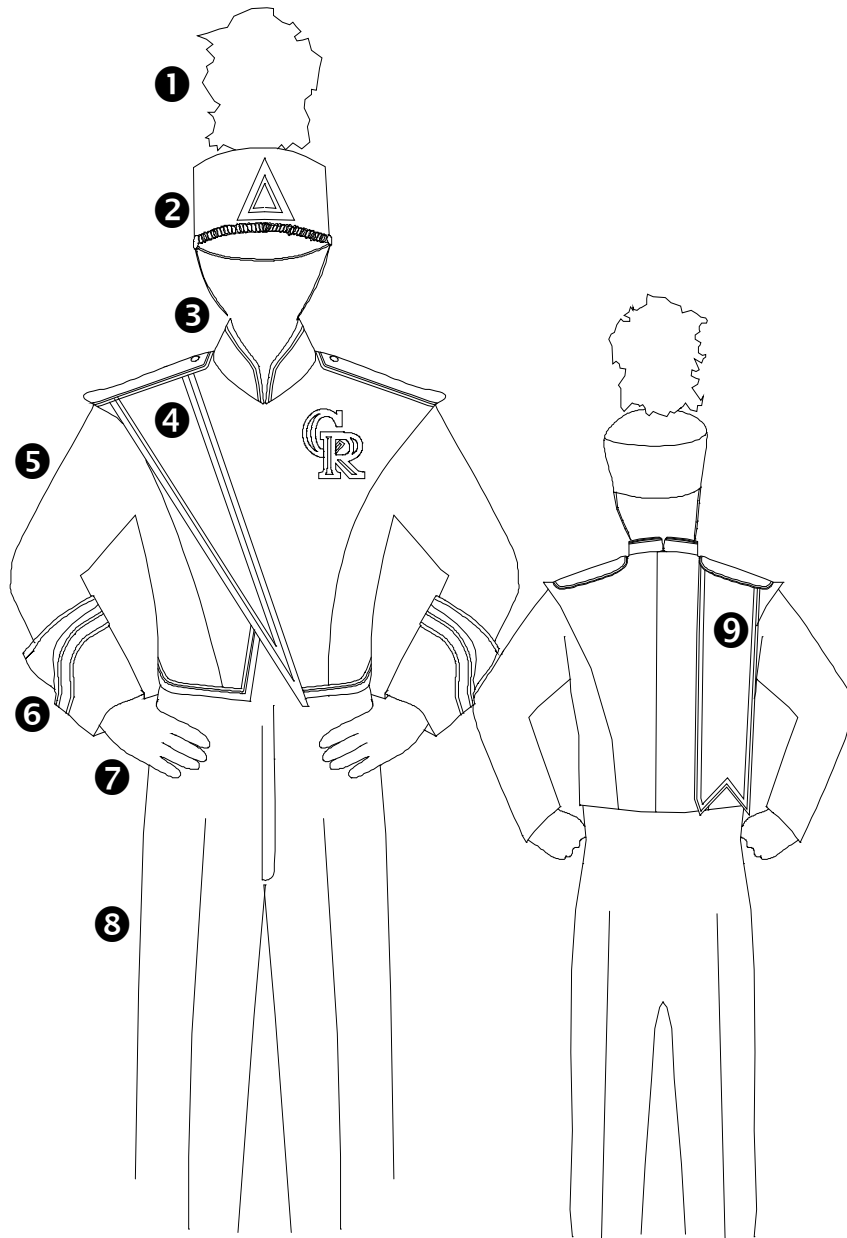
Hat Boxes and Garment Bags. Each marching band student is issued a hatbox (which will hold the hat, gloves, and gauntlets) and a garment bag for the uniform. The hatbox and garment bag will have a matching number to make

identification easier. Please remind your student to not place the hat box or shoes in the garment bag; this puts undue stress on the bottom seam of the bag. Likewise, please do not allow the hatbox or garment bag to drag along the ground. Do not mark, alter, or otherwise decorate the hatbox or the garment bag in any way. As soon as the uniform is brought home following an event, it should be examined for dirt. If the uniform has become damp, remove it from the bag and allow it to "air out." Don't let it set in the garment bag to grow mold.

Handling, Care and Cleaning of Uniforms.

(Some students may need extra assistance, encouragement, and reminders to fulfill their responsibility of properly caring for their uniforms. Please help them learn how to do this by themselves). If you take the uniform to a dry cleaner schedule this work so that the jacket will be available for the next performance. Check all uniform parts before leaving the cleaners to make sure all parts are accounted for and have the correct numbers.

Number one rule: Don't wait to learn about the condition of the uniform until just before it is needed.



No.	Item	Cost	Care
1	Plume	\$9.00	Issued by chaperones just prior to an event. Returned at conclusion of each performance.
2	Hat	\$25.00	Wipe the hat with a damp cloth and a mild cleaning solution regularly, especially the inside of the hat if hairspray or gel is used.
3	Collar Band	\$4.00	After each event, remove the white collar band on the jacket and machine wash. Lay flat to dry and do not dry clean or put them in the dryer – they will shrink.
4	Baldrick (sash)	\$35.00	Before each performance, use “Scotch Guard”, or other “water/dirt

			repellent” spray product. Do not dry clean.
5	Jacket	\$135.00	On a regular basis, dry-clean the uniform jacket. Don’t forget to remove the collar band. Remove the Cape and Baldric before going to the dry cleaners.
6	Gauntlets (pr)	\$12.00	The gauntlets may be cleaned with a damp cloth only. Make sure the hat and gauntlets are dry before storing them in the hatbox.
7	Black Gloves	\$4.00	Student-supplied. Available at B&B Music for about \$3.00 to \$5.00. Good to have a back-up pair.
8	Pants	\$55.00	Before each performance, use “Scotch Guard”, or other “water/dirt repellent” spray product (especially the inside cuff). The pants may be machine washed and hung up to dry. To prolong the life of the pants do not put them in the dryer.
9	Cape	\$35.00	Spot clean. Does not get dry cleaned.
-	Garment Bag	\$14.00	Do not place the hat box or shoes in the garment bag.
-	Hatbox	\$6.00	Store gloves and gauntlets in the hatbox.
-	Shoes	\$20.00- \$30.00	Student-supplied. Regular polishing of shoes will ensure that they will stay in good condition. Available at B&B Music. Tell them you are with the Caesar Rodney Band to get our special price.
-	Black Socks	N/A	Student-supplied. At least mid-calf high.
-	Color Guard	N/A	Re-established each year. Mrs. Sandlin will provide separate care instructions.

Concert Band Uniforms: What Should We Know?

Concert band uniforms also include the Jazz Band and Pit Bull members. Since the uniform is worn only a few times, wear and tear is less of an issue. However, as with the marching band uniform, if the concert band uniform becomes soiled, please take care it as soon as possible. Listed below is instructions for care.

Item	Cost	Care
Men		
Tuxedo Jacket	\$120.00	Dry clean only.
Tuxedo Pants	\$60.00	May be washed and hung to dry or dry cleaned.
Tuxedo Shirt	\$20.00	Machine wash.
Cummerbund	\$10.00	Spot clean.
Tie	\$4.00	Spot clean.
Button Studs (4)	\$2.00	Easy to lose.
Black Shoes	N/A	Student-supplied.
Black Socks	N/A	Student-supplied.
Women		
White Blouse	\$20.00	Machine wash.
Skirt	\$60.00	Machine wash, line dry.

Nylon Socks (nude or black)	N/A	Student-supplied.
Black Dress Shoes (heels not greater than 2 inches)	N/A	Student-supplied.

Is There Any Fun Stuff?

Every other year, usually in February, the band is invited lead the Parade on Main Street at Walt Disney World. The band departs Delaware on a Tuesday and arrives home on Sunday. They spend four days enjoying the sights and sounds of Disney World and will usually visit another park such as Universal Studios. This is normally considered *the* highlight of most students band careers.

On the year that the band doesn't travel to Florida, a one-day trip is arranged to Hershey Park in Hershey, PA in May.

What If My Child Takes Medication?

You must give written, notarized permission before your student may take any medication. Forms are available at the first parents meeting in August. There should be a notary available to finalize the document.

The form must be filled out for each student, and it must be completed prior to the first away band event or your student will not be allowed to participate.

Before leaving for away events the chaperones will receive a medications list for each bus. Chaperones will refer to that list before allowing a student any medication to ensure parental permission is authorized. This does not apply to other first aid items such as Band-Aids, sunscreen, feminine needs, etc.

Helpful Hints to Save You Time and Grief:

Make your child responsible for being prepared. The first time they are late or not ready will be the last. They learn to be resourceful when they have to be.

Try and carpool to competitions on Saturdays; it's a great way to meet other parents and save a little gas money as well.

Be prepared to cheer! Although they may not readily admit it, the band likes having their own cheering section. At TOBs, you can purchase Air Grams (shout outs), candy grams, flowers, and/or other small things the host TOB school might be selling.

Don't put uniform items away in the closet or drawers when cleaned. Keep all items (socks, shoes, band shirt, gloves, etc.) in a bag. This will save time spent hunting for them when they are needed.

Visit the band web site to stay informed.

Adjudicate means to judge.

If you want to drive to a competition, directions to all events can be found on the web site.

How Does the Band Travel?

When the marching band travels to football games and competitions, it will be on standard

yellow school busses, with anywhere from four to six busses all traveling together. Students are assigned to the same buses for the year.

For longer range trips such as Florida, Hershey, or Allentown, the band will travel on coach busses.

All trips originate and terminate at the back of the high school. Please pay particular attention to the arrival times back at CRHS; Mr. Sandlin is rarely late by more than a few minutes. Often times the band returns early. When this happens, the chaperones will ensure students call their ride home with the new arrival time.

If you haven't seen it already, the marching band has a semi-tractor trailer to haul all the show equipment. The truck usually follows the busses to competitions and tries to stay behind the last bus. Please do not get in between the truck and the busses while on the road. This will only increase the chance of the truck separating from the busses. Keeping the truck and busses together is important due to the limited parking at many competition sites. If the truck arrives after the busses it may be parked in a distant location making pre-show preparations difficult.

Also, regarding the truck, many times it will leave a little early to get a head start on unloading back at the school. If you find yourself in the parking lot waiting for your student and can spare some help, the pit crew parents will appreciate an extra hand unloading instruments and equipment.

How Are Our Students Supervised?

The staff has responsibility for the students at all times. However, when the students are out of contact with staff they are supervised by 10

permanently assigned chaperones. Chaperones have one primary role and that is to ensure the safety and welfare of the students. Chaperones also assist in getting everyone where they need to be, with everything they need, in a timely manner. Finally, chaperones help the band deal with a wide range of issues, potential disasters, calamities, and ordinary routines--most often during a stressful time crunch.

There are two parent chaperones per bus. One to two nurses travel with the band and carry the medical cards. Permanent chaperones on the busses get to know the students well, this is beneficial for a number of reasons. Chaperones often provide drinks and snacks for the students.